



# Asian Marine Services Public Company Limited



We Emphasize on Time and Quality



# Group Of Companies

## SEATRAN FERRY SEATRAN DISCOVERY



## ASIMAR MARINE SERVICES PLC.



## SEATRAN PORT ECOMARINE



## GENERAL MARINE



### Transportation

11 ROPAX & 6 High Speed Ferry Operate in Gulf of Thailand

### Repair/Fabrication

80 Vessels repairing annually  
450 Manpower  
Listed in Stock Market Exchange of Thailand (SET)

ISO 9001:2015  
ISO 14001:2015  
ISO 45001:2018

### Water environment solution provider

4 Dredging vessel  
Water Environment Product & Services  
e.g. Water hyacinth harvester

ISO 9001:2015

### Business Development

Look Ahead to capture Group's business opportunities related to Group's business area  
Marine Equipment supplier  
Authorized dealer/Representative





# Group Of Company



- Ship Repair
- Ship Building
- Ship Conversion
- Steel Construction
- Offshore Support



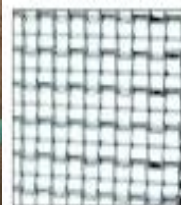
- Environmental Care Products
- Dredging
- Weeds Harvesting



- Ship Broker
- Marine Equipment Representative



Manpower Supply



Narrow Mesh Net Harvester Boiling



Custom Fitting Station Deck



Deck with Custom Fitting







# About ASIMAR

- ASIMAR : ASIan MARine services public company limited
- Only one shipyard listed in The Stock Exchange of Thailand (SET)
- Located at Chaopraya river wharf no. 1
- 300 meters water front average depth of 10 meters
- Max. 5 vessels anchorage area (Sapasamitr area)
- Operated by 2 floating docks (Max. 20,000DWT capacity)
- 2 launching slipways (Max. 125 meters in length x 28 meters width)
- Average 80 vessels docking repairing annually
- 20,000 DWT new built annual capability
- 1,000,000 Man-Hour FTE (Full Time Employed) ++
- Quality : ISO 9001 : 2015
- Safety : OHSAS 18001 : 2007
- Environmental : ISO 14001 : 2015



# Reference Customers





# SHEQ



## Certificate of Approval

This is to certify that the Management System of:

**Asian Marine Services Public Co., Ltd.**

128 Mu 3, Suksawad Road, Prasamutjedes, Samutprakarn, 10290, Thailand

has been approved by LRQA to the following standards:

ISO 9001:2015

Basem Obaid - Global Head of Training and Improvement Services  
Issued by: Lloyd's Register International (Thailand) Limited  
for and on behalf of: Lloyd's Register Quality Assurance Limited

Current issue date: 12 October 2018  
Expiry date: 12 October 2021  
Certificate identity number: 10141730

Original approval(s):  
ISO 9001 – 13 October 2000

Approval number(s): ISO 9001 – 0046582

The scope of this approval is applicable to:

Construction of New Ship Building (including Design, Shipbuilding Facilities Area) of Length Up to 160 M. and Ship Repair up to 25,000 DWT



## Certificate of Approval

This is to certify that the Management System of:

**Asian Marine Services Public Co., Ltd.**

128 Moo 3, Suksawad Road, Prasamutjedes, Samutprakarn, 10290, Thailand

has been approved by LRQA to the following standards:

ISO 45001:2018

Basem Obaid - Global Head of Training and Improvement Services  
Issued by: Lloyd's Register International (Thailand) Limited  
for and on behalf of: Lloyd's Register Quality Assurance Limited

Current issue date: 22 May 2019  
Expiry date: 10 January 2022  
Certificate identity number: 10198276

Original approval(s):  
ISO 45001 – 10 January 2013

Approval number(s): ISO 45001 – 0045274

The scope of this approval is applicable to:

Construction of New Ship Building  
(including Design, Shipbuilding Facilities Area)  
of Length up to 160 M. and Ship Repair up to 25,000 DWT



## Certificate of Approval

This is to certify that the Management System of:

**Asian Marine Services Public Co., Ltd.**

128 Mu 3 Suksawad Road, Samutprakarn, Samutprakarn, 10290, Thailand

has been approved by LRQA to the following standards:

ISO 14001:2015

Basem Obaid - Area Operations Manager  
Issued by: Lloyd's Register International (Thailand) Limited  
for and on behalf of: Lloyd's Register Quality Assurance Limited

Current issue date: 9 July 2018  
Expiry date: 23 August 2020  
Certificate identity number: 10103322

Original approval(s):  
ISO 14001 – 24 August 2017

Approval number(s): ISO 14001 – 56890

The scope of this approval is applicable to:

Construction of new ship building  
(including Design, Shipbuilding Facilities Area)  
of length up to 160m. and Ship Repair up to 25,000 DWT



ISO 9001 : 2015  
shipbuilding and repairing  
including ship designing

OHSAS 45001 : 2018  
The Occupational Health &  
Safety Management System

ISO 14001 : 2015  
Environmental  
Management System



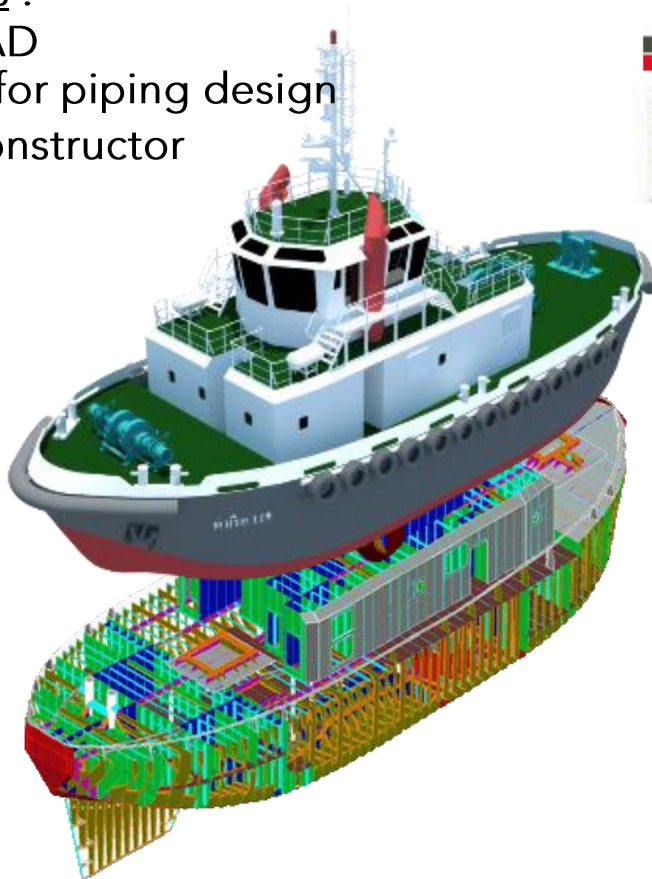


# Design Facilities

ASIMAR's design team of engineers and draftsmen support repair ships, ship conversion and new-building activities preparing detailed design, shop and as-built drawings.

## Programs :

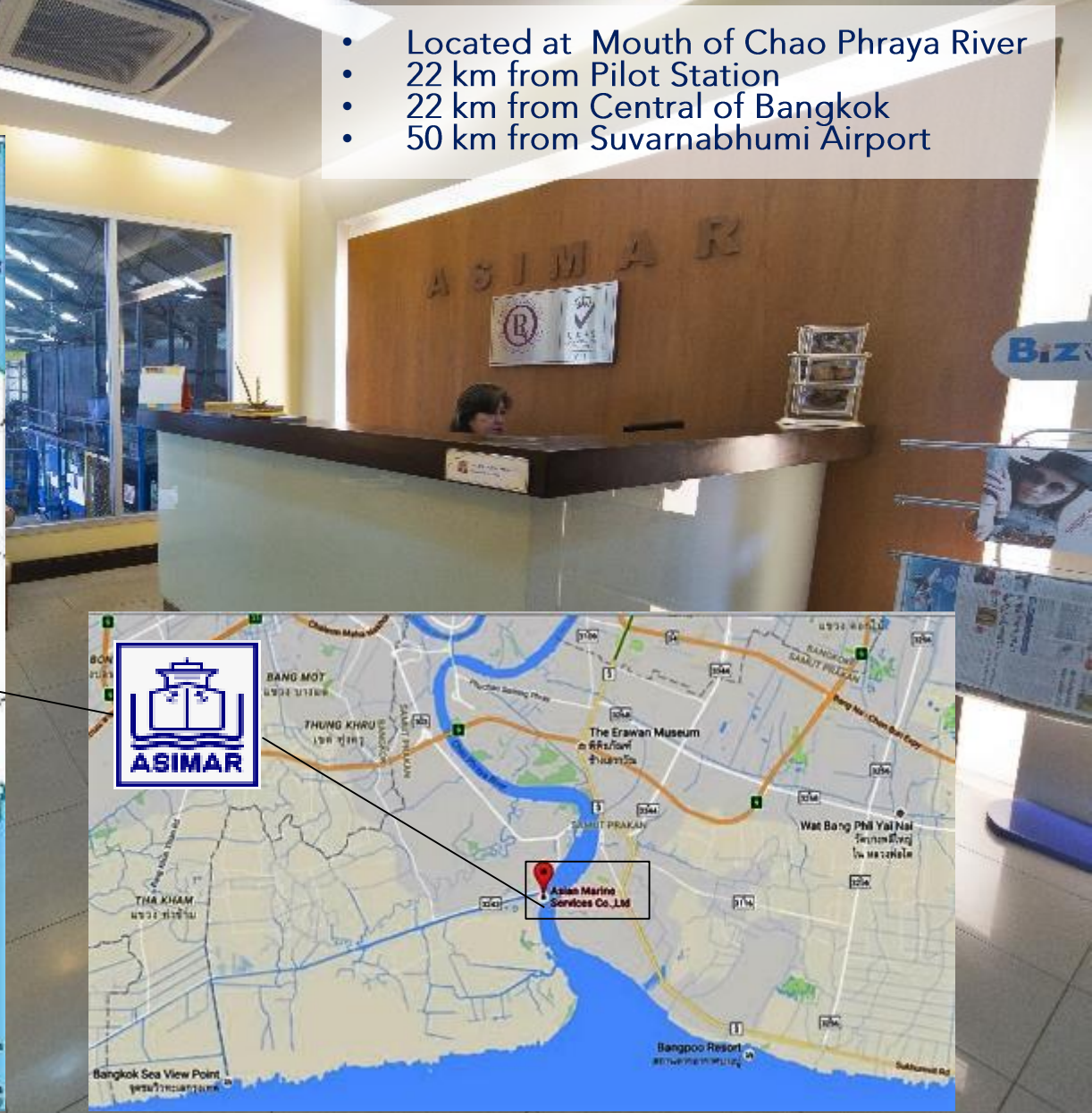
- AutoCAD
- SB3DS for piping design
- Ship Constructor





# Location Is The Key

- Located at Mouth of Chao Phraya River
- 22 km from Pilot Station
- 22 km from Central of Bangkok
- 50 km from Suvarnabhumi Airport







# Facilities At Samutprakarn



ASIMAR

1

Max. vessel	6,000 DWT
L x B	97m x 19.6m.
Max lifting cap.	2,000 t.

ASIMAR

2

Max. vessel	20,000 DWT
L x B	161m x 28.5m.
Max lifting cap.	6,500 t.

## Primary Facilities

Total Yard Area	: 36,000 m2 (9 Acre)
Water Front	: 300 m.
Wharf	: 126 m , depth 12 m.
Slipways	
- Northern	: 1 x 125 m x 28 m
- Southern	: 1 x 80 m x 18 m
Range for Repair	: Vessel up to 20,000 Dwt
Range for New Building	: Vessel up to 120 m LOA.
Fabrication Shops	: 3 nos. total 3,300 m2
Machine Shop	: 2 nos. total 2,100 m2
Pipe shop	: 600 m2
CNC shop	: 600 m2
Bonded Warehouse	: 400 M <sup>2</sup>







# Facilities At Surat Thani

## Primary Facilities

Total Yard Area	: 38,400 sq.m.
Slipway	
Length	: 95 m.
Breadth	: 20.5 m.
Work shop	: 3,136 sq.m.
Range for Repair	: Up to 1000 GRT



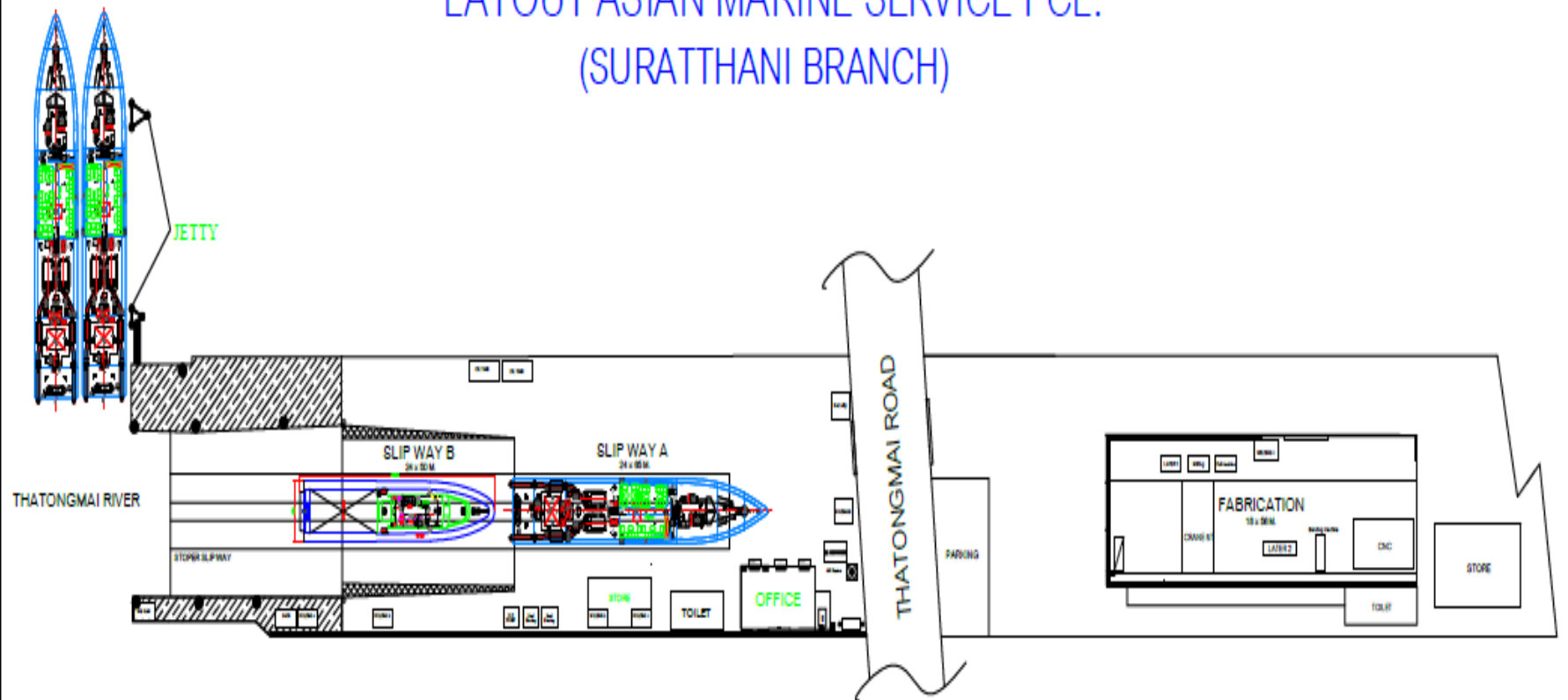
## Services

- |   |  |
|---|--|
| <ul style="list-style-type: none"><li>• Hull preparation and Painting</li><li>• Anchor chain</li><li>• Hull anode</li><li>• Valve</li><li>• Tail shaft repair</li></ul> | <ul style="list-style-type: none"><li>• Steel work</li><li>• Pipe work</li><li>• Machinery work (Winch, Hydraulic motor, Pump)</li><li>• Electrical work</li><li>• Spare part supply</li></ul> |
|---|--|



# Layout At Surat Thani

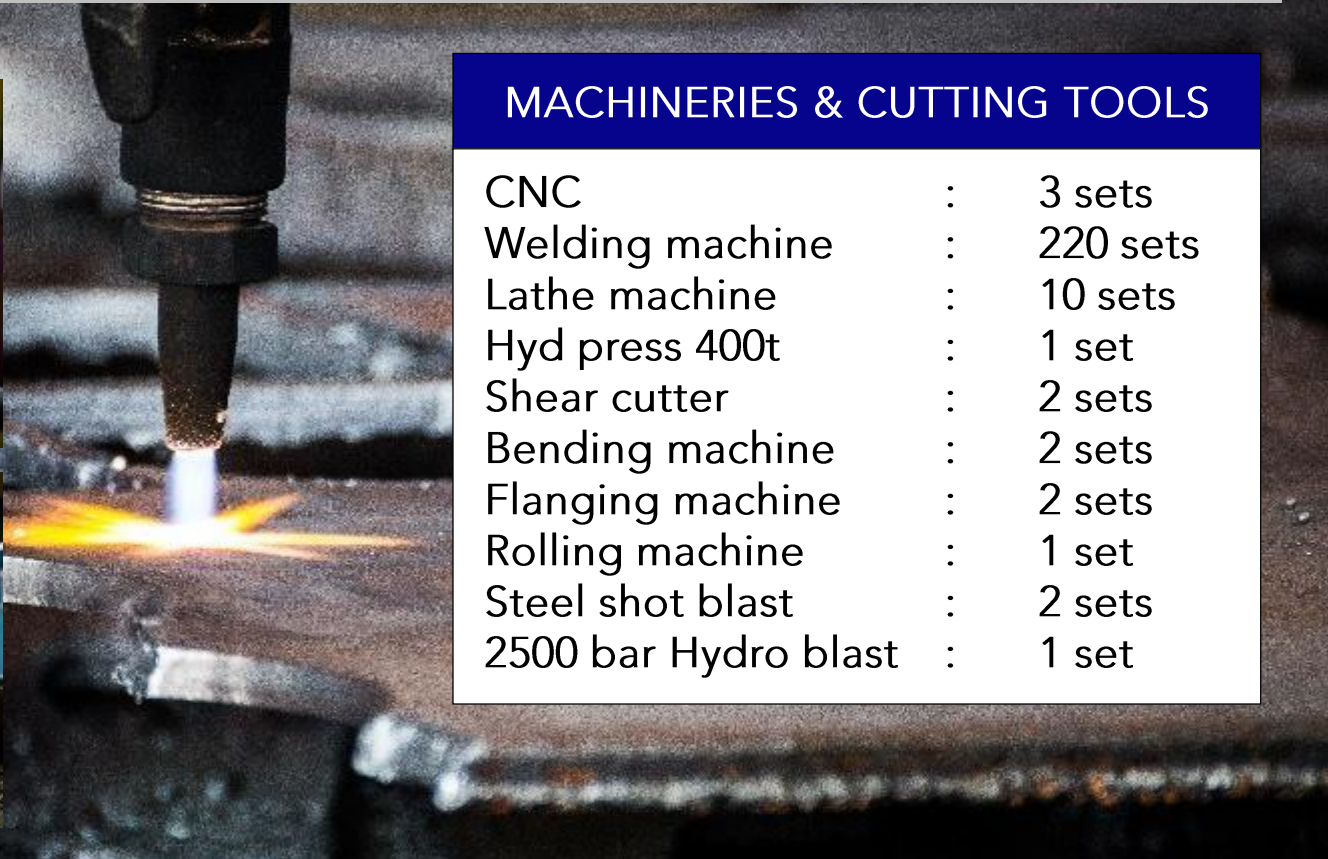
## LAYOUT ASIAN MARINE SERVICE PCL. (SURATTHANI BRANCH)







# Major Equipment



## MACHINERIES & CUTTING TOOLS

CNC	:	3 sets
Welding machine	:	220 sets
Lathe machine	:	10 sets
Hyd press 400t	:	1 set
Shear cutter	:	2 sets
Bending machine	:	2 sets
Flanging machine	:	2 sets
Rolling machine	:	1 set
Steel shot blast	:	2 sets
2500 bar Hydro blast	:	1 set





# Key Markets / Track Record

Tug Boats



Defence & Security



Work Boats



Cargo Ships



Offshore Vessels



Passenger & Ferries







## Key Markets / Track Record



## Tug Boats





# Tug Boat

## 30 TONS BOLLARD PULL ASD - TARUA 119

### Owner

Port Authority of Thailand

### Principal Particulars

Length Overall	32.00 metres
Breadth (Moulded)	10.50 metres
Depth Hull (Moulded)	4.50 metres
Draft (Moulded)	3.00 metres

### Design Standard

LR Class







# Tug Boat

## 40 TONS BOLLARD PULL ASD - TARUA 301

### Owner

Port Authority of Thailand

### Principal Particulars

Length Overall	32.00 metres
Breadth (Moulded)	10.50 metres
Depth Hull (Moulded)	4.50 metres
Draft (Moulded)	3.00 metres

### Design Standard

LR Class





# Tug Boat

## 40 TONS BOLLARD PULL ASD - KOH TAKIEV

### Owner

Port Authority of Sihanuokville,  
Cambodia

### Principal Particulars

Length Overall	31.00 metres
Breadth (Moulded)	9.20 metres
Depth Hull (Moulded)	3.80 metres
Draft (Moulded)	2.90 metres

### Propulsion Machinery

Main Engine 2 X Diesel engine  
Total power 2 X 1600 PS @ 750 rpm.  
Azimuth thruster 2 X 5 blade  
Propeller diameter 2,000 mm.

### Design Standard

NK Class







# Tug Boat

## 50 TONS BOLLARD PULL ASD - TARUA 304

### Owner

Port Authority of Thailand

### Principal Particulars

Length Overall	36.20 metres
Breadth (Moulded)	10.00 metres
Depth Hull (Moulded)	4.40 metres
Draft (Moulded)	4.00 metres
Gross tonnage	250.00 GRT

### Propulsion Machinery

Main engine 2 X Diesel engine  
Total power 2 X 1600 PS @ 750 rpm.  
Azimuth thruster 2 X 5 blade FPP in nozzle  
Propeller diameter 2,000 mm.

### Design Standard

LR Class





## Key Markets / Track Record



# Defence & Security





# Defence & Security

## H.T.M.S HUAHIN PGB-541

### Principal Particulars

Length Overall	60.00 metres
Breadth (Moulded)	8.90 metres
Depth Hull (Moulded)	5.25 metres
Max Speed	25.00 knot
Range	2500.00 NM

### Engine/Generator/ Aux. Machinery

Main Engine  
: 3 x PAXMAN, Type 12 VP185, 3,500 BHP

Gen. Set  
: 3 x Man, Type D2866 LE, 230 kW. @  
1,500 RPM. (214 ekW)

Sludge Pump (Sewage)  
: 2 x 2kW/Eah

S.W. Pressure  
: 1 x 7.5 m<sup>3</sup>/H

HYD. POWER PACK for CPP  
: 1 x LIP, HPP-200





# Key Markets / Track Record



## Work Boats







# Container & Work Boat

## TARUA 123

### Owner

Port Authority of Thailand

### Principal Particulars

Length Overall	41.80 metres
Breadth (Moulded)	10.00 metres
Depth Hull (Moulded)	4.00 metres
Full load Draft (Moulded)	2.70 metres
Deadweight	200.00 T.
Gross tonnage	593.00

### Design Standard

ABS Class





# Container & Work Boat

## TOYOTA Canal Cleaning Boat

### Owner

TOYOTA

### Principal Particulars

Length Overall	9.00 m.
Beam, (Moulded)	3.50 m.
Depth Hull (Moulded)	1.20 m.
Draft (Moulded)	0.60 m.
Deck Loading	5.00 T/m <sup>2</sup>

### Foldable Crane

Max. Lifting capacity	6.50 T/m.
Outreach hydraulic extension	5.20 m.

#### Lifting Capacity standard

- 3,800kg at 1.70 m.
- 2,300kg at 2.50 m.
- 1,800kg at 3.50 m.
- 1,300kg at 5.00 m.
- 1,000kg at 6.50 m.

Slewing angle	410 angle
---------------	-----------

### Propulsion Machinery

Main Engine (Diesel engine)  
X1 1GD-FTV engine 175 hp at 3400 rpm.  
X2 Paddle Wheel





# Container & Work Boat

## Paddle wheel

### Principal Particulars

Length Overall	14.00 m.
Beam, (Moulded)	3.80 m.
Depth Hull (Moulded)	0.85 m.
Draft (Moulded)	0.40 m.







# Key Markets / Track Record



## Cargo Ships





# Container & Work Boat

## M.V.GATI PRIDE 442 TEU Cargo Ship

### Principal Particulars

Length Overall	101.01 m.
Breadth (Moulded)	18.80 m.
Depth Hull (Moulded)	9.30 m.
Draught mean (Full load)	7.30 m.
Gross tonnage	5015.00 GRT
Cargo ship	422.00 TEU
Crew	
Fuel	
Fresh Water	

### Propulsion Machinery

Main Engine	X1 Wartsila 8L32
Output	4,000 kW
Propellers	X1 CPP, Dia. 4.5 m.

### Deck Load

Tank Top in Hold	10 T/sqm.
Weather Deck	40 T/ TEU Container
Hatch Cover	40 T/ TEU/FEU Container





# Container & Work Boat

## Tran-shipment Barge Crane

### Principal Particulars

Length Overall	63.00 metres
Breadth (Moulded)	22.00 metres
Depth Hull (Moulded)	5.00 metres
Designed draft	2.00 metres
Deck Loading	5.00 T/m <sup>2</sup>
Gross tonnage	2,204.00 GRT
Crane	2xMac Gregor K3030-4H

### Scope of work

- Crane column and support design
- Crane column and support installation
- Crane housing and Jib installation
- Crane Load test
- Hull construction
- Accommodation fabrication
- Piping work for Ballast tank ,Gen.
- Cooling and accommodation







## Key Markets / Track Record



## Offshore Vessels



# Offshore Production

## M.V.AZZAM

### Principal Particulars

Length Overall	50.00 metres
Breadth (Moulded)	12.00 metres
Depth Hull (Moulded)	4.50 metres
Draft (Moulded)	3.60 metres
GRT/NRT	885/265 Ton
Deadweight	2,204 Ton
Deck Cargo	255 Ton
Deck Area	Sq.meter

### Propulsion Machinery

Main Engines	WARTSILA 6L20
Propulsion	2 x 1440 HP
Gear Box	ZF.W 12000
Bow Thruster control	Schottel motor
Stern Thruster	CAT. C18
Aux. Genset	3 x 250 K.W CAT C 9





# Offshore Production

## M.V.ADAMS NOMAD

### Principal Particulars

Length Overall	60.00 metres
Breadth (Moulded)	13.30 metres
Depth Hull (Moulded)	5.00 metres
Draft (Moulded)	3.80 metres
GRT	1,419.587 Ton
Deadweight	1,024.55 Ton

### Propulsion Machinery

Main Engines	2 x Caterpillar 3512B-1174kW @1600rpm
Propulsion	2 x HRP AZIMUTH THRUSTER UNTIS, HRP6000 TYPE HRP6111WM
Bow Thruster	2 x HRP 400C TT rate 350 kwx 1500 rpm
Main Generator	4 x Cummins-STAMFORD 425 kW/440 V/60 Hz/3 Ph
Emergency	1 x Cummins-STAMFORD 64 kW/440 V/60 Hz/3 Ph







# Offshore Production

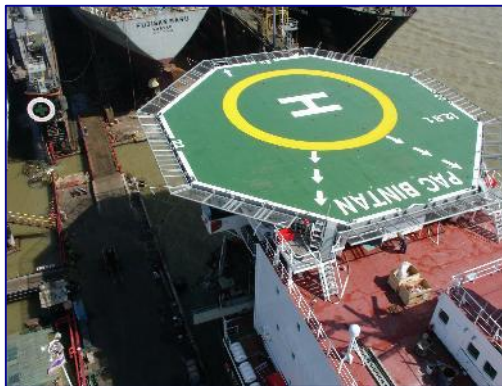
## M.V. PAC BINTAN

### Principal Particulars

Length Overall	90.59 metres
Breadth (Moulded)	20.00 metres
Depth Hull (Moulded)	5.00 metres
Draft (Moulded)	3.70 metres
GRT/NET	2,518/755 Ton
Deck Area	531.3 Sq. meter 100 mm thick hardwood allow the travel of 225 SWL crawler crane, which is about 200t in weight.
Deck Strength	10 T/ M2

### Propulsion Machinery

Main Engines	2 x YANMAR M220
Propulsion	2 X Fix pitch propeller
Bow Thruster	Jastram bow thruster type BU60
Aux. Genset	4 x 218 kW Caterpillar 3406B 3 x 500 kW Caterpillar 3412





## Key Markets / Track Record



## Passenger & Ferries





# Passenger & Ferries

## Aluminum Catamaran - M.V. Pralarn

### Principal Particulars

Length Overall	20.00 metres
B.O.A.	8.00 metres
B.HULL ONLY	5.25 metres
DEPTH MLD.	2.60 knot
DRAUGHT MEAN	1.25 metres
SPEED (FULL LOAD)	25 KNOTS

### Propulsion Machinery

Main Engine	2 X MTU, 8 V 183 TE 72 551 HP@2100 RPM
SHAFTING	2 X FIXED PITCH PROPELLOR







# Passenger & Ferries

## Aluminum Catamaran - M.V. Namuang

### Principal Particulars

Length Overall	20.00 metres
B.O.A.	8.00 metres
B.HULL ONLY	5.25 metres
DEPTH MLD.	2.60 knot
DRAUGHT MEAN	1.25 metres
SPEED (FULL LOAD)	25 KNOTS

### Propulsion Machinery

Main Engine	2 X MTU, 8 V 183 TE 72 551 HP@2100 RPM
SHAFTING	2 X FIXED PITCH PROPELLOR





# Passenger & Ferries

## Aluminum Catamaran - Chao Praya Express Boat (CPX)

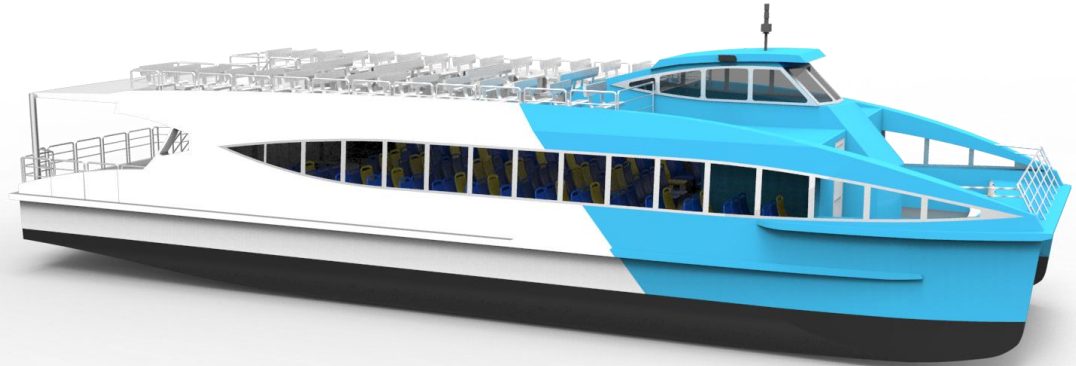
### Principal Particulars

Length Overall	23.90 metres
Breadth (Moulded)	6.70 metres
Depth Hull (Moulded)	2.90 metres

### Passenger

Passengers	230 seats
Crew	2 men

Engine	2x 350 HP
--------	-----------







## Key Markets / Track Record



## Steel Construction







# Steel Construction

## Installation of steel structure for Suvarnabhumi Airport







# Steel Construction

## Installation of steel structure for Suvarnabhumi Airport





# Steel Construction

Fabrication and Installation the Cargo & Passenger terminal of  
New Sadao Customs House 1600 tons steel.







# Steel Construction





*We Emphasize on Time and Quality*

