



Asian Marine Services Public Company Limited



We Emphasize on Time and Quality



Vision & Mission

Vision

To develop the company to be one of the best in the region for

- Ship repair
- Shipbuilding
- Ship conversion and upgrading
- Engineering construction
- Offshore support & construction

With quality works and services to meet customer's requirements.

Mission

The company's commitment is to accomplish following important tasks;

Customers:

To fulfill our client's requirements with optimum standard of services at the minimum time

Shareholders:

To satisfy shareholders in terms of corporate profitability and growth

Yard Staff:

Career development and good standard of living for all concerned

Environment and Community:

To be responsible for environmental protection and community well to be.



Group of Companies

SEATRAN FERRY
SEATRAN DISCOVERY



ASIAN MARINE
SERVICES PLC.



ECOMARINE



GENERAL MARINE



Transportation

Repair/Fabrication

Water
environment
solution provider

Business
Development

8 ROPAX & 6 High
Speed Ferry Operate in
Gulf of Thailand

80 Vessels repairing
annually
450 Manpower
Listed in Stock
Market Exchange of
Thailand (SET)

ISO 9001:2015
ISO 14001:2015
ISO 45001:2018

4 Dredging vessel
Water
Environment
Product & Services
e.g. Water
hyacinth harvester

ISO 9001:2015

Look Ahead to
capture
Group's business
opportunities related
to Group's business
area
Marine Equipment
supplier
Authorized
dealer/Representative



About ASIMAR

- ASIMAR : ASlan MARine services public company limited
- Only one shipyard listed in The Stock Exchange of Thailand (SET)
- Located at Chaopraya river wharf no. 1
- 300 meters water front average depth of 10 meters
- Max. 5 vessels anchorage area (Sapasamitr area)
- Operated by 2 floating docks (Max. 20,000DWT capacity)
- 2 launching slipways (Max. 125 meters in length x 28 meters width)
- Average 80 vessels docking repairing annually
- 20,000 DWT new built annual capability
- 1,000,000 Man-Hour FTE (Full Time Employed) ++
- Quality : ISO 9001 : 2015
- Environmental : ISO 14001 : 2015
- Safety workplace : OHSAS 45001 : 2018

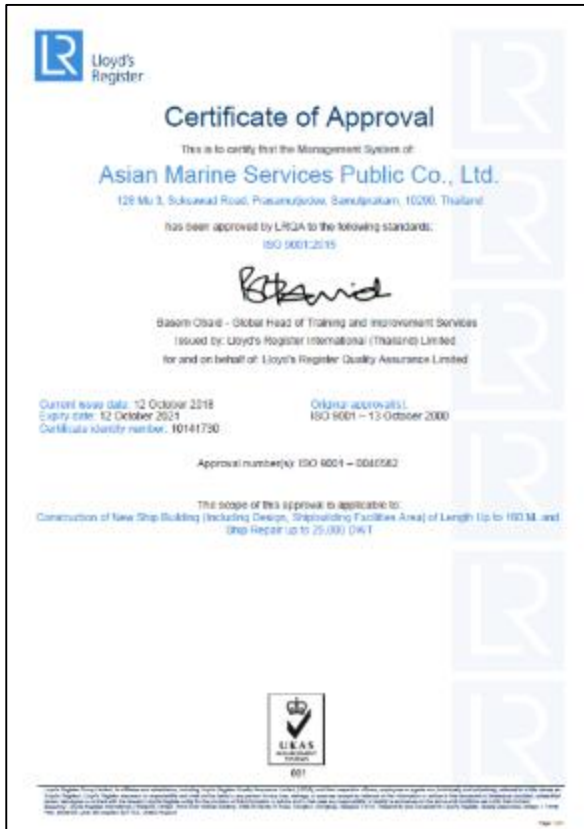


Reference Customers





SHEQ



ISO 9001 : 2015
shipbuilding and repairing
including ship designing



OHSAS 45001 : 2018
The Occupational Health &
Safety Management System



ISO 14001 : 2015
Environmental
Management System

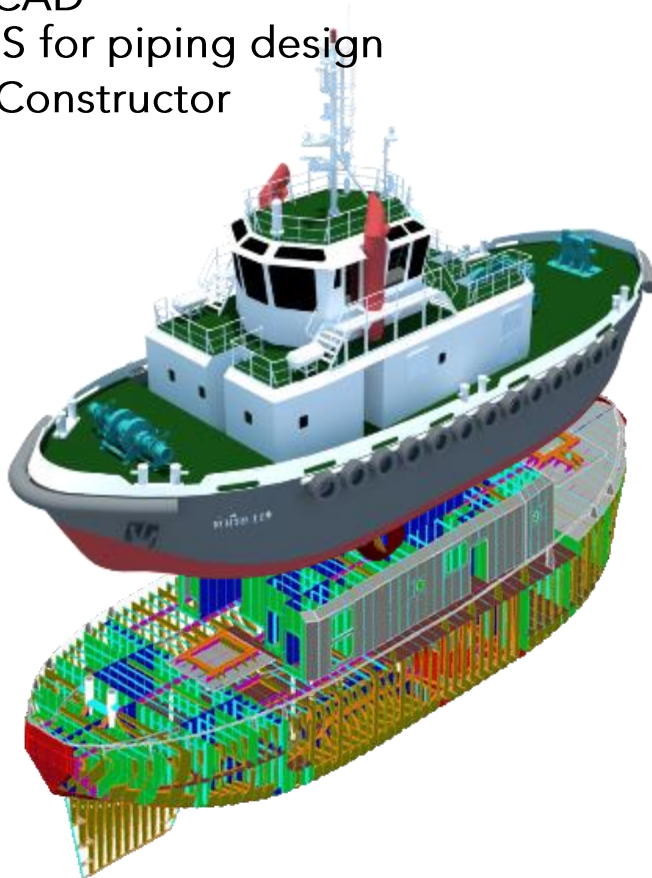


Design Facilities

ASIMAR's design team of engineers and draftsmen support repair ships, ship conversion and new-building activities preparing detailed design, shop and as-built drawings.

Programs :

- AutoCAD
- SB3DS for piping design
- Ship Constructor



Lloyd's
Register



ClassNK



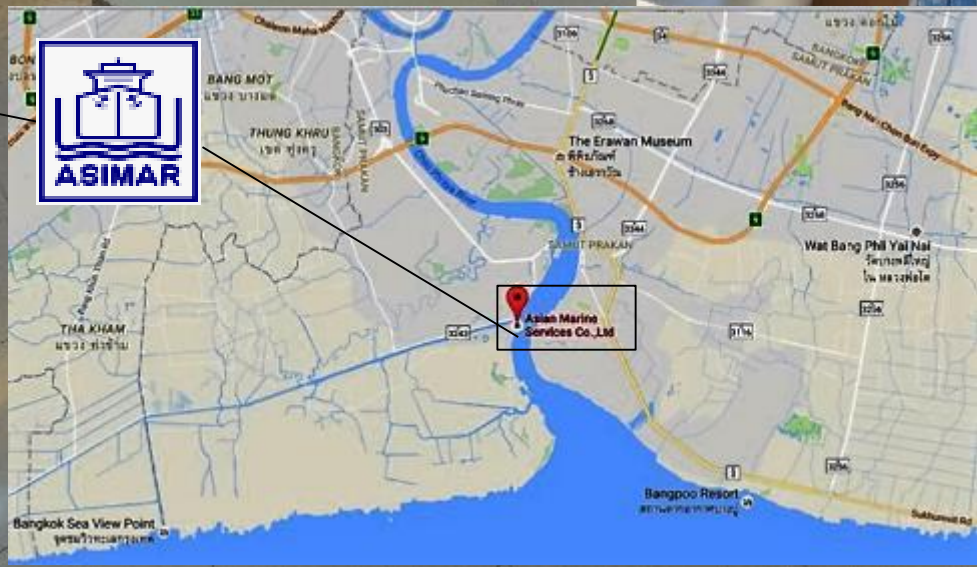
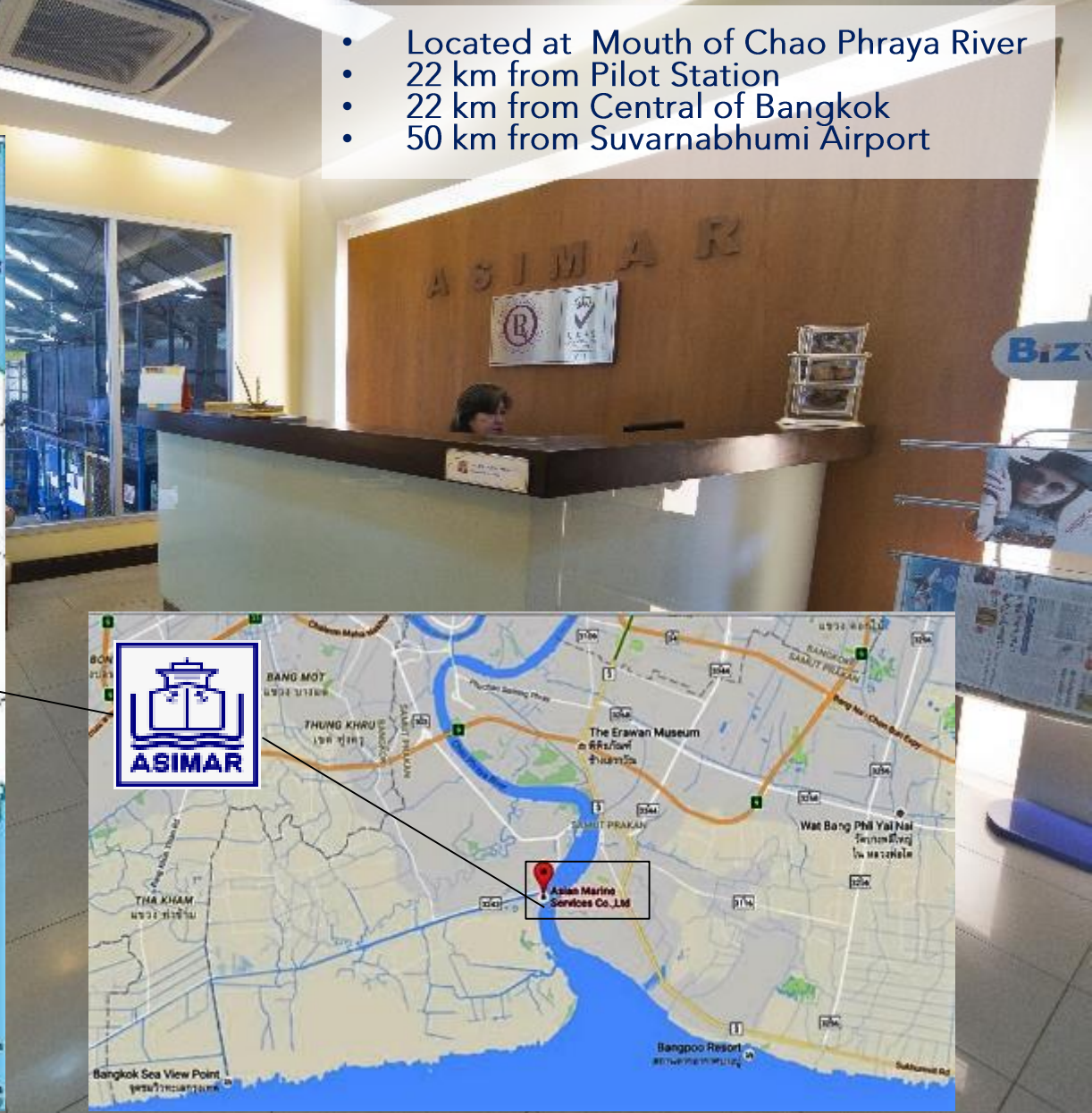
**BUREAU
VERITAS**





Location is The Key

- Located at Mouth of Chao Phraya River
- 22 km from Pilot Station
- 22 km from Central of Bangkok
- 50 km from Suvarnabhumi Airport





Facilities at Samutprakarn



ASIMAR

1

Max. vessel	6,000 DWT
L x B	97m x 19.6m.
Max lifting cap.	2,000 t.

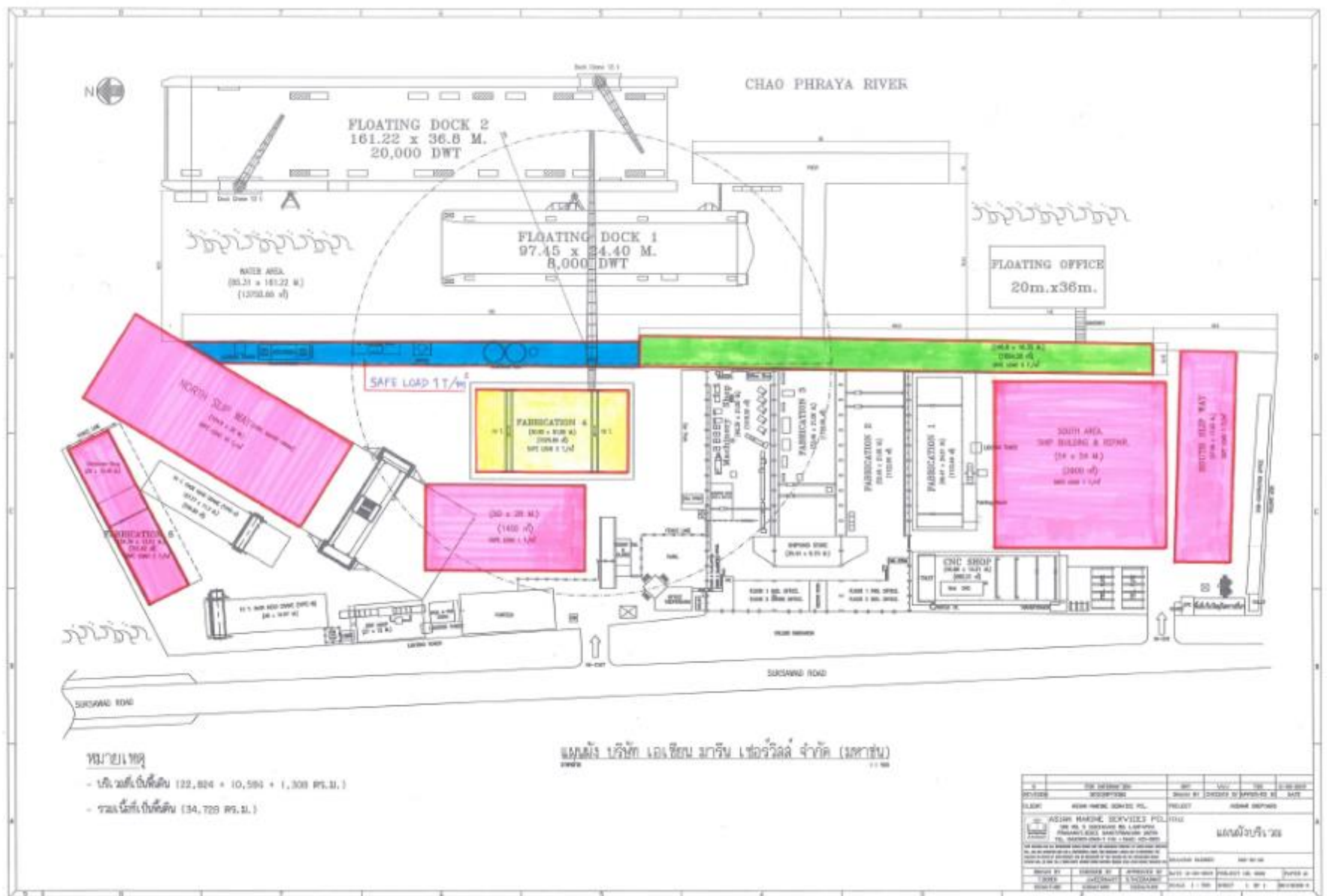
ASIMAR

2

Max. vessel	20,000 DWT
L x B	161m x 28.5m.
Max lifting cap.	6,500 t.

Primary Facilities

Total Yard Area	: 36,000 m2 (9 Acre)
Water Front	: 300 m.
Wharf	: 126 m , depth 12 m.
Slipways	
- Northern	: 1 x 125 m x 28 m
- Southern	: 1 x 80 m x 18 m
Range for Repair	: Vessel up to 20,000 Dwt
Range for New Building	: Vessel up to 120 m LOA.
Fabrication Shops	: 3 nos. total 3,300 m2
Machine Shop	: 2 nos. total 2,100 m2
Pipe shop	: 600 m2
CNC shop	: 600 m2
Bonded Warehouse	: 400 M ²





Facilities at Surat Thani

Primary Facilities

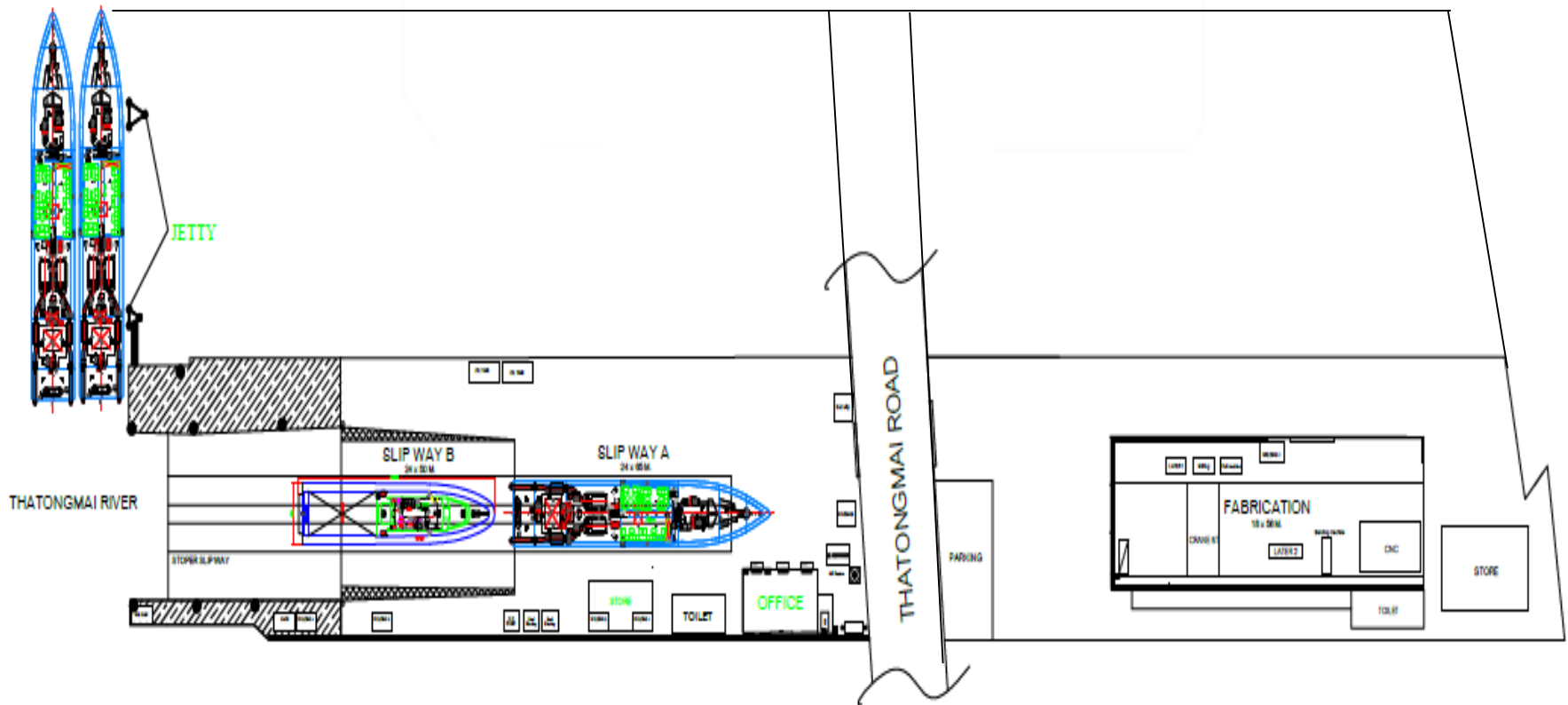
Total Yard Area	: 38,400 sq.m.
Slipway	
Length	: 95 m.
Breadth	: 20.5 m.
Work shop	: 3,136 sq.m.
Range for Repair	: Up to 1000 GRT

Services

- Hull preparation and Painting
- Anchor chain
- Hull anode
- Valve
- Tail shaft repair
- Steel work
- Pipe work
- Machinery work (Winch, Hydraulic motor, Pump)
- Electrical work
- Spare part supply



Layout at Surat Thani



LAYOUT ASIAN MARINE SERVICE PCL.
(SURATHANI BRANCH)



Major Equipment

MACHINERIES & CUTTING TOOLS

CNC	:	3 sets
Welding machine	:	220 sets
Lathe machine	:	10 sets
Hyd press 400t	:	1 set
Shear cutter	:	2 sets
Bending machine	:	2 sets
Flanging machine	:	2 sets
Rolling machine	:	1 set
Steel shot blast	:	2 sets
2500 bar Hydro blast	:	1 set





Key Markets / Track Record

Tug Boats



Defence & Security



Work Boats



Cargo Ships



Offshore Vessels



Passenger & Ferries





Key Markets / Track Record



Tug Boats





Tug Boat

30 TONS BOLLARD PULL ASD - TARUA 119

Owner

Port Authority of Thailand

Principal Particulars

Length Overall	32.00 meters
Breadth (Moulded)	10.50 meters
Depth Hull (Moulded)	4.50 meters
Draft (Moulded)	3.00 meters

Performance

Max. speed:	12 knots
Static Bollard pull:	30.0 tons
Gross tonnage:	420

Main Machineries

Main Engine	2 X 1030 kW, 800 rpm, 8 cyl.
Propulsion System	2 X Azimuth Thrusters (Z-Drive Fixed Pitch)

Fire Fitting

FIFI System	2 X 250 m ³ /hr, Engine Drive
	165 kW @ 3100 rpm

Design Standard

LR Class





Tug Boat

40 TONS BOLLARD PULL ASD - TARUA 301

Owner

Port Authority of Thailand

Principal Particulars

Length Overall	32.00 meters
Breadth (Moulded)	10.50 meters
Depth Hull (Moulded)	4.50 meters
Draft (Moulded)	3.00 meters

Performance

Max. speed:	12 knots
Static Bollard pull:	40.0 tons
Gross tonnage:	420

Main Machineries

Main Engine	2 X 1324 kW, 900 rpm, 8 cyl.
Propulsion System	2 X Azimuth Thrusters (Z-Drive Fixed Pitch)

Fire Fitting

FIFI System	2 X 250 m ³ /hr, Engine Drive
	165 kW @ 3100 rpm

Design Standard

LR Class





Tug Boat

40 TONS BOLLARD PULL ASD - KOH TAKIEV

Owner

Port Authority of Sihanuokville,
Cambodia

Principal Particulars

Length Overall	31.00 metres
Breadth (Moulded)	9.20 metres
Depth Hull (Moulded)	3.80 metres
Draft (Moulded)	2.90 metres

Propulsion Machinery

Main Engine	2 X Diesel engine
Total power	2 X 1600 PS @ 750 rpm.
Azimuth thruster	2 X 5 blade
Propeller diameter	2,000 mm.

Design Standard

NK Class





Tug Boat

50 TONS BOLLARD PULL ASD - TARUA 304

Owner

Port Authority of Thailand

Principal Particulars

Length Overall	36.20 metres
Breadth (Moulded)	10.00 metres
Depth Hull (Moulded)	4.40 metres
Draft (Moulded)	4.00 metres
Gross tonnage	250.00 GRT

Propulsion Machinery

Main engine	2 X Diesel engine
Total power	2 X 1600 PS @ 750 rpm.
Azimuth thruster	2 X 5 blade FPP in nozzle
Propeller diameter	2,000 mm.

Design Standard

LR Class





Key Markets / Track Record



Defence & Security



Defence & Security

H.T.M.S HUAHIN PGB-541 & H.T.M.S KLANG PGB-542

Principal Particulars

Length Overall	60.00 metres
Breadth (Moulded)	8.90 metres
Depth Hull (Moulded)	5.25 metres
Max Speed	25.00 knot
Range	500.00 NM

Engine/Generator/ Aux. Machinery

Main Engine
: 3 x PAXMAN, Type 12 VP185, 3,500 BHP

Gen. Set
: 3 x Man, Type D2866 LE, 230 kW. @ 1,500 RPM.
(214 ekW)

Sludge Pump (Sewage)
: 2 x 2kW/Eah

S.W. Pressure
: 1 x 7.5 m³/H

HYD. POWER PACK for CPP
: 1 x LIP, HPP-200





Defence & Security

Modernization

Refurbishment of 3 (three)
Marine Police Department
Petrol gun boat



Refurbishment on Royal Thai Navy
Vessel : HTMS Supairin



Refurbishment on Royal Thai Navy
Vessel : Bangrajan & Nongsarai



Key Markets / Track Record



Work Boats





Work Boat

TARUA 123

Owner

Port Authority of Thailand

Principal Particulars

Length Overall	41.80 metres
Breadth (Moulded)	10.00 metres
Depth Hull (Moulded)	4.00 metres
Full load Draft (Moulded)	2.70 metres
Deadweight	200.00 T.
Gross tonnage	593.00

Design Standard

ABS Class





Work Boat

TOYOTA Canal Cleaning Boat

Owner

Toyota Motor Thailand

Principal Particulars

Length Overall	9.00 m.
Beam, (Moulded)	3.50 m.
Depth Hull (Moulded)	1.20 m.
Draft (Moulded)	0.60 m.
Deck Loading	5.00 T/m ²

Foldable Crane

Max. Lifting capacity	6.50 T/m.
Outreach hydraulic extension	5.20 m.
Lifting Capacity standard	
•	3,800kg at 1.70 m.
•	2,300kg at 2.50 m.
•	1,800kg at 3.50 m.
•	1,300kg at 5.00 m.
•	1,000kg at 6.50 m.
Slewing angle	410° angle

Propulsion Machinery

Main Engine (Diesel engine)
X1 1GD-FTV engine 175 hp at 3400 rpm.
X2 Paddle Wheel





Work Boat

16 units of Paddle wheel

Principal Particulars

Length Overall	14.00 meters
Breadth (Moulded)	3.80 meters
Depth Hull (Moulded)	0.85 meters
Draft max load	0.40 meters

Performance

Max. speed:	6 km/hr.
Main Engine	1 X 60 HP, 2600 rpm
Propulsion System	2 X Paddle Wheel

Capacity

Fuel tank	100 L
Hydraulic oil tank	180 L





Key Markets / Track Record



Cargo Ships





Container & Cargo Ship

M.V.GATI PRIDE 442 TEU Cargo Ship

Principal Particulars

Length Overall	101.01 m.
Breadth (Moulded)	18.80 m.
Depth Hull (Moulded)	9.30 m.
Draught mean (Full load)	7.30 m.
Gross tonnage	5015.00 GRT
Cargo ship	442.00 TEU

Propulsion Machinery

Main Engine	X1 Wartsila 8L32
Output	4,000 kW
Propellers	X1 CPP, Dia. 4.5 m.

Deck Load

Tank Top in Hold	10 T/sqm.
Weather Deck	40 T/ TEU Container
Hatch Cover	40 T/ TEU/FEU





Container & Cargo Ship

Tran-shipment Barge Crane

Principal Particulars

Length Overall	63.00 metres
Breadth (Moulded)	22.00 metres
Depth Hull (Moulded)	5.00 metres
Designed draft	2.00 metres
Deck Loading	5.00 T/m ²
Gross tonnage	2,204.00 GRT
Crane	2xMac Gregor K3030-4H

Scope of work

- Crane column and support design
- Crane column and support installation
- Crane housing and Jib installation
- Crane Load test
- Hull construction
- Accommodation fabrication
- Piping work for Ballast tank ,Gen.
- Cooling and accommodation





Key Markets / Track Record



Offshore Vessels



Offshore Vessel

M.V.AZZAM

Principal Particulars

Length Overall	50.00 metres
Breadth (Moulded)	12.00 metres
Depth Hull (Moulded)	4.50 metres
Draft (Moulded)	3.60 metres
GRT/NRT	885/265 Ton
Deadweight	2,204 Ton
Deck Cargo	255 Ton
Deck Area	Sq.meter

Propulsion Machinery

Main Engines	WARTSILA 6L20
Propulsion	2 x 1440 HP
Gear Box	ZF.W 12000
Bow Thruster control	Schottel motor
Stern Thruster	CAT. C18
Aux. Genset	3 x 250 K.W CAT C 9





Offshore Vessel

M.V.ADAMS NOMAD

Principal Particulars

Length Overall	60.00 metres
Breadth (Moulded)	13.30 metres
Depth Hull (Moulded)	5.00 metres
Draft (Moulded)	3.80 metres
GRT	1,419.587 Ton
Deadweight	1,024.55 Ton

Propulsion Machinery

Main Engines	2 x Caterpillar 3512B-1174kW @1600rpm
Propulsion	2 x HRP AZIMUTH THRUSTER UNTIS, HRP6000 TYPE HRP6111WM
Bow Thruster	2 x HRP 400C TT rate 350 kwx 1500 rpm
Main Generator	4 x Cummins-STAMFORD 425 kW/440 V/60 Hz/3 Ph
Emergency	1 x Cummins-STAMFORD 64 kW/440 V/60 Hz/3 Ph





Offshore Vessel

M.V. PAC BINTAN

Principal Particulars

Length Overall	90.59 metres
Breadth (Moulded)	20.00 metres
Depth Hull (Moulded)	5.00 metres
Draft (Moulded)	3.70 metres
GRT/NET	2,518/755 Ton
Deck Area	531.3 Sq. meter 100 mm thick hardwood allow the travel of 225 SWL crawler crane, which is about 200t in weight.
Deck Strength	10 T/ M2

Propulsion Machinery

Main Engines	2 x YANMAR M220
Propulsion	2 X Fix pitch propeller
Bow Thruster	Jastram bow thruster type BU60
Aux. Genset	4 x 218 kW Caterpillar 3406B 3 x 500 kW Caterpillar 3412





Key Markets / Track Record



Passenger & Ferries





Passenger & Ferries

Aluminum Catamaran - Pralarn

Principal Particulars

Length Overall	20.00 metres
B.O.A.	8.00 metres
B.HULL ONLY	5.25 metres
DEPTH MLD.	2.60 knot
DRAUGHT MEAN	1.25 metres
SPEED (FULL LOAD)	25 KNOTS
Passenger	140 PAX.

Propulsion Machinery

Main Engine	2 X MTU
SHAFTING	2 X FIXED PITCH PROPELLOR





Passenger & Ferries

Aluminum Catamaran - Namuang

Principal Particulars

Length Overall	26.40 metres
B.O.A.	8.50 metres
B.HULL ONLY	2.30 metres
DEPTH MLD.	2.60 knot
DRAUGHT MEAN	1.25 metres
SPEED (FULL LOAD)	25 KNOTS
Passenger	260 PAX.

Propulsion Machinery

Main Engine	2 X MTU
SHAFTING	2 X FIXED PITCH PROPELLOR





Passenger & Ferries

4 units of Air Conditioned Aluminum Catamaran : RIVA EXPRESS 1-4

SHIP PARTICULARS

CONSTRUCTION	ALUMINIUM
LENGTH OVERALL	23.95 m
MOULDED DEPTH	2.9 m
BEAM EXTREME	7.0m (6.7m MOULDED)
DWL	1.15m
FUEL	2x 900 L
WATER	2x 200 L
SULLAGE	1x 400 L
PASSENGERS	230
CREW	2
ENGINES	2x 350hp
PROPULSION	FIXED PITCH PROPELLERS
SURVEY / CLASS	NSCV 1E (AUSTRALIAN)





Under construction

200-PAX Electric Catamaran

Principal Particulars

Length Overall	23.97 metres
Breadth (Moulded)	7.00 metres
Depth Hull (Moulded)	2.30 metres

Passenger	
Passengers	250 seats

Propulsion	
Electric Motor	2x 135 kW
Battery Capacity	815 kW-hr.
Speed App.	20 Km/H.





Under construction

SEA WASTE COLLECTOR BOAT

Principal Particulars

Length Overall	15.30 meters
Breadth (Moulded)	4.00 meters
Depth Hull (Moulded)	2.00 meters
Draft max load	1.20 meters

Performance

Max. speed:	12 knots
Main Engine	1 X 404 kW, 3300 rpm
Propulsion System	1 X Fixed Pitch

Capacity

Fuel tank	500 L
Hydraulic oil tank	150 L
Oil Separator tank	430 L
Storage tank	100 L
Oil Dispersant tank	50 L
Fresh water tank	100 L
Trash container	4 m3
Crew	4 P

Design Standard

RINA Class





Key Markets / Track Record



Steel Construction





Steel Construction

Installation of steel structure for Suvarnabhumi Airport





Steel Construction

Installation of steel structure for Suvarnabhumi Airport





Steel Construction

Fabrication and Installation the Cargo & Passenger terminal of
New Sadao Customs House 1600 tons steel.





Steel Construction



We Emphasize on Time and Quality

